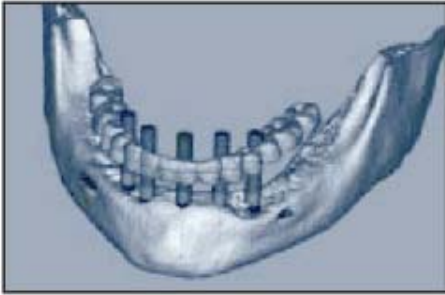


Diagnostic appointment for CT/Surgical Index/Computer Simplant Guided Surgery

Click here for explanation of Simplant software <http://www.SimPlant.com>



This appointment gathers the information needed to plan where your teeth need to be placed, to determine both the quantity and quality of your bone and how much healing time will be needed after your implants are placed. A 3D reconstruction of your jaw is fabricated from stereolithographic technology. A surgical drill guide is fabricated to fit your bone before surgery. The specific implants are selected to support the new restoration in the desired position. You will have a Medical CT scan (parallel beams) completed to allow the most accurate reading of your bone density.

**Price Range
\$782 - \$1911**

Single Tooth Replacement with a Dental Implant



Replacing a single lost tooth with an implant that provides a post to receive a cemented crown, provides a predictable, natural and cost effective method of replacing the tooth without requiring preparation and crowning of the adjacent teeth. Depending on the density of the bone and primary stability of the implant, a temporary crown can be placed immediately.

**Price Range
\$2440 - \$3740**

Three Tooth Bridge on Two Implants



Replacement of a single tooth or teeth with implants that provide a post(s) to receive a cemented bridge provides a predictable, natural and cost effective method of replacing the missing teeth without requiring the preparation and crowning of adjacent teeth. Depending on the density of the bone and primary stability of the implants, a temporary bridge can be placed immediately.

**Price Range
\$7352 - \$8352**



Overdenture Retained by 3 Implants

For totally edentulous lower jaws, 3 implants provide retention of a denture using balls or Locator™ attachments. The denture rests on the soft tissue, with the implants providing lateral stability as well as retention. This restoration can subsequently be upgraded to a completely implant-supported screw retained restoration if more implants are added in the future.

**Price Range
\$7000 - \$8030**



Bar Overdenture Retained on 4-6 Implants

For totally edentulous jaws, using a minimum of 4 implants in either the lower jaw or upper jaw, implants provide support and retention of a denture using balls, clips, and other retentive means. By splinting 4-6 implants, placed in the anterior of each jaw, the bar can extend behind the implants to provide a totally implant supported removable restoration.

**Price Range
\$17,746 - \$18,746**



Full Arch Screw-retained Restoration on 5-8 Implants

For totally edentulous jaws, using a minimum of 5 implants provides support for a screw-retained fixed bridge. In the upper jaw, bone grafting to raise the floor of the maxillary sinus or angulation of the most posterior implants may be required.

**Price Range
\$23,000 - \$25,000**



Full Arch Ceramic Zirconium screw-retained restoration on six to eight implants

<http://www.zirkonzahn.com/en/galleries/zirconia-experts/frank-moeller>
<http://www.zirkonzahn.com/en/galleries/zirconia-experts/reg-wilson>

For totally edentulous jaws, using a minimum of 6 implants in the lower jaw and 6 implants in the upper jaw, implants provide support for a fixed screw-retained bridge.

**Price Range
\$32,000 - \$42,000**



Bone Grafting (<http://bti-biotechnologyinstitute.com/uk/regenerative-medicine/>)

Bone Grafting allows us to replace lost bone to allow implant placement. It may be needed before any of the above procedures can be done or may be completed in the same visit.

The CT scan will answer the questions of where and how much bone do I need before Implants will work for me?

**Price Range
\$660 - \$1570**